
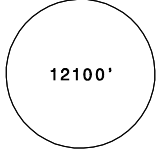
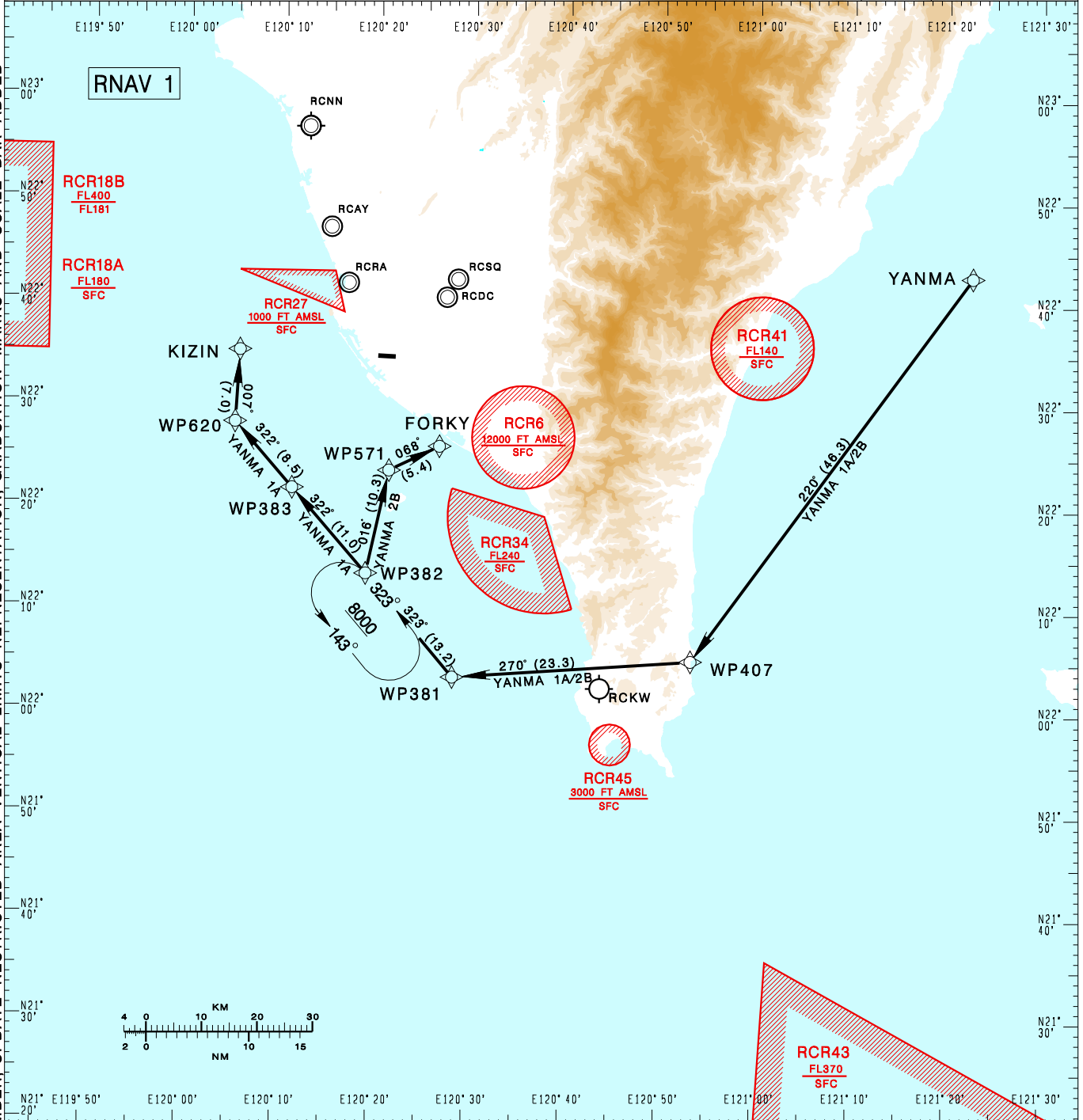


**高雄國際機場**  
KAOHSIUNG INTL AD

YANMA 1A RCKH STAR  
YANMA 2B RNAV(RWY09)  
RNAV(RWY27)

|  |                                    |                    |   |   |                    |
|--|------------------------------------|--------------------|---|---|--------------------|
| TAIPEI ACC<br>127.9 129.1  | KAOHSIUNG APP<br>124.7 125.7 119.4 | ATIS<br>127.8      | <br>VAR 4° W | <br>12100'<br>MSA ARP 25NM |                    |
| Apt Elev: 32'  |                                    | Trans Level: FL130 |   |   | Trans Alt: 11,000' |
| BEARINGS ARE MAGNETIC; DISTANCES ARE NAUTICAL MILES; ELEVATIONS, HEIGHTS IN FEET |                                    |                    |   |   |                    |

CHANGES: NEW PAGE NUMBER UPDATE RESTRICTED AREA VERTICAL LIMITS REPRESENTATION GRADUATION MARKS AND SCALE BAR ADDED



**YANMA ONE ALFA RNAV ARRIVAL**  
 Depart YANMA then to WP407, WP381, WP382, WP383, WP620, KIZIN.  
 Cross WP407 at or above FL210, cross WP383 at or above 8,000ft,  
 cross WP620 at or below 7,000ft, cross KIZIN at or above 3,000ft.

**YANMA TWO BRAVO RNAV ARRIVAL**  
 Depart YANMA then to WP407, WP381, WP382, WP571, FORKY.  
 Cross WP407 at or above FL210, cross FORKY at or above 4,000ft.

**NOTE**  
 YANMA 2B: ATS surveillance required.